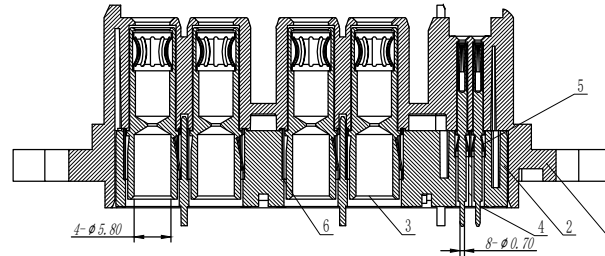
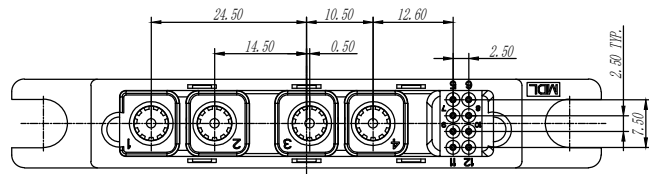
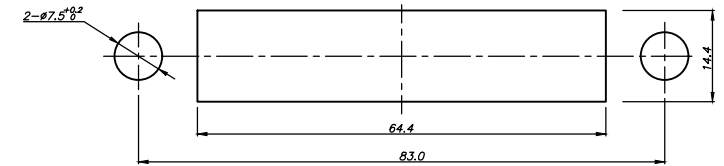


# Customer Drawing

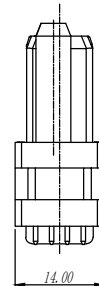
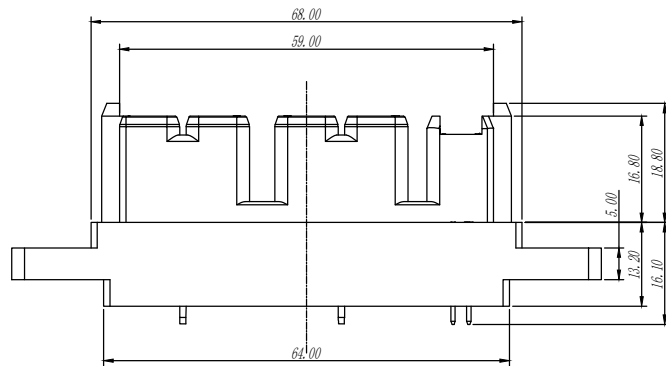
		CHANGE DESCRIPTION		
Rev.	ECN No.	DESCRIPTION	DATE	APPROVED
A		First release	11.12/20	David.Guo



Section A-A



Recommended PCB size (tolerance ±0.05mm)



## Technical Requirements:

### 1. Materials:

Insulator: engineering plastic, UL94-V0, Black;  
 φ5 PIN: copper alloy, silver plated on the surface;  
 22# PIN: copper alloy, gold plated on the surface;

### 2. Performance:

Withstand voltage: φ5 contact: 1500V AC, 22# contact: 500V AC;  
 Rated current: 22# contact 3A, φ5 contact 85A;  
 Contact impedance (initial value): 22# contact ≤ 13m Ω,  
 φ5 contact ≤ 1m Ω;

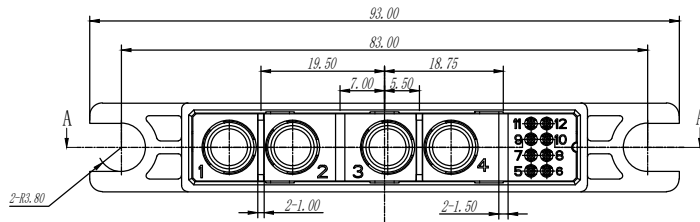
Normal state: ≥ 3000m insulation resistance;

The mechanical life is 500 times;

### 3. Working environment:

Temperature: - 40 ~ 125 °C;

### 4. The products meet the latest RoHS standard;



6		8# Locating claw		4	Number: 2, 3, 4	Unless otherwise specified Tolerances .X +/- 0.50 .XX +/- 0.30 .XXX +/- Angle +/- 3° Material:\ Dimension unit English unit inch Metric MM	Responsible person Drawing by: Checked by: Approved by: File path: Third-angle projection	Date MEDLON HK Industrial Co., Ltd. Name: JDC12 Core Power Connector Socket
5		24# Locating claw		8	Number: 6, 7, 8, 9, 10, 11, 12			
4		22# Plate Hole		8	Number: 6, 7, 8, 9, 10, 11, 12			
3		Ø5 Hole Pressing		4	Bulk delivery	DWG No.: JDC-12Z1-001		
2		Socket Clip		1		Scale		
1		JDC12-Core Socket Insulator		1		First page Total 1 page		
序号	名称	料号	数量	备注				